



THE

PERFECT FIT

FOR THE

TOUGHEST

JOBS

IFR WORKWEAR'S

Women's Line

YES! WE CARRY YOUR SIZE

All Shapes and Sizes Welcome!



We carry a wide variety of extra small and petite sizes as well as sizes for tall and full figured women.



THE TRUSTED LEADER IN QUALITY FLAME & ARC RESISTANT WORKWEAR

Style 452 - UltraSoft® 7 oz *Suit-All* Top
Style 453 - UltraSoft® 7 oz *Suit-All* Bottom

Featuring 2" 3M™ Scotchlite™ Reflective Trim

- 7 oz - 88% cotton, 12% high tenacity nylon from Westex®
- Engineered for flame resistance and guaranteed for the life of the garment
- 50% extended garment wear life over 100% cotton
- Soft feel of cotton comfort
- H2S monitor can attach to outside of pocket with strap and elastic fasteners
- Multi-purpose protection from electric arc, flash fire and molten ferrous metal
- Westex UltraSoft® fabric meets the requirements of:
NFPA 2112, CGSB 155.20, NFPA 70E, CSA Z462, ASTM F1506



© Canadian Patent Design No. 148755
US Patent Design No. D731,750



STOCK COLOURS:



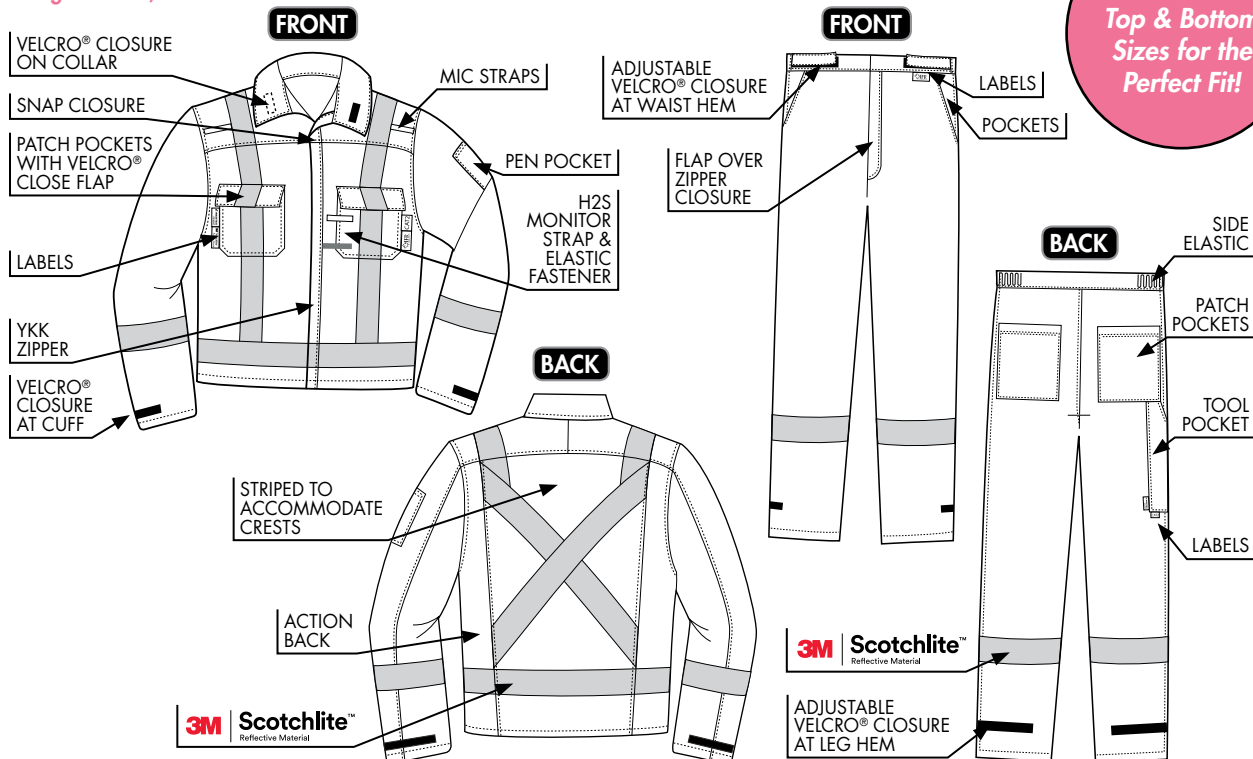
STOCK SIZES:

34	36	38	40	42	44	46	48	50	52-54	56-58
34T	36T	38T	40T	42T	44T	46T	48T	50T	52T-54T	56T-58T

Available in
Royal Blue

Regular size *Suit-All* Tops were designed to fit women or shorter men, and the tall size will fit most men. UltraSoft® *Suit-All* Top can also be worn with UltraSoft® Bib Pants - Style 422.

Suit-All Bottoms are measured with standard coverall sizing, not waist sizing and are only available in regular sizes, not tall.



Mix & Match
Top & Bottom
Sizes for the
Perfect Fit!

Westex UltraSoft® is a registered trademark of Westex® by Milliken® used under license by IFR Workwear Inc. 3M™ and Scotchlite™ are trademarks of 3M™ used under license by IFR Workwear Inc. in Canada.

THE TRUSTED LEADER IN QUALITY FLAME AND ARC RESISTANT WORKWEAR

www.ifrworkwear.ca | 403-347-5480 | info@ifrworkwear.ca

Style 471 - Women's UltraSoft® 7 oz Deluxe Segmented Striped Work Shirt

Featuring 2" 3M™ Scotchlite™ Segmented Reflective Heat Transfer Material

Style 671 - Women's UltraSoft® 7 oz Cargo Pants

- 7 oz - 88% cotton, 12% high tenacity nylon from Westex®
- Engineered for flame resistance and guaranteed for the life of the garment
- 50% extended garment wear life over 100% cotton
- Soft feel of cotton comfort
- Multi-purpose protection from electric arc, flash fire and molten ferrous metal
- Westex UltraSoft® fabric meets the requirements of: NFPA 2112, CGSB 155.20, NFPA 70E, CSA Z462, ASTM F1506



STOCK COLOURS:



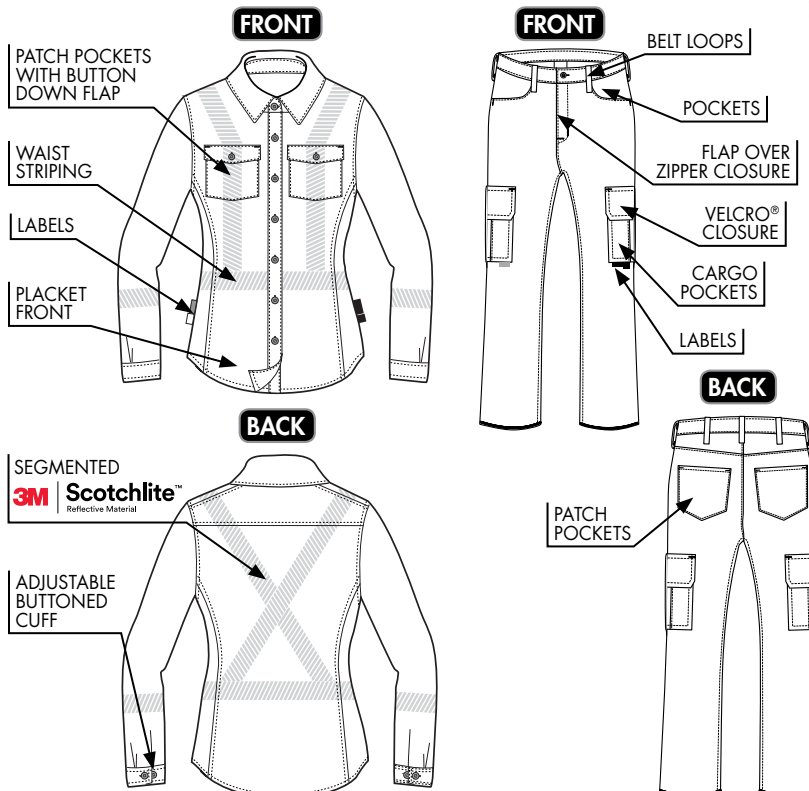
USO471 STOCK SIZES:

XS	S	M	L	XL	2XL
----	---	---	---	----	-----

UPN671 STOCK SIZES:

26	28	29	30	31	32	34	36	38
----	----	----	----	----	----	----	----	----

Unhemmed leg length to 36". Pants are measured using standard waist sizing.



Pairs Perfectly With:

Leather Belt

Style 1750

- Made with durable leather
- Leather is inherently flame resistant
- Fastens with FR VELCRO®, easily adjustable, tear-away style
- Absence of buckles prevents electrical arcing, static shock, snagging, and other potential workplace hazards in various industries such as electrical and oilfield
- Airport friendly

Westex UltraSoft® is a registered trademark of Westex® by Milliken® used under license by IFR Workwear Inc. 3M™ and Scotchlite™ are trademarks of 3M™ used under license by IFR Workwear Inc. in Canada.

Style 474 - *Women's* Segmented Striped Fleece Full Zip Jacket

Featuring 2" 3M™ Scotchlite™ Segmented Reflective Heat Transfer Material

- 14 oz - 55% modacrylic, 45% cotton
- Fabric is inherently flame resistant
- Full zipper
- Slash pockets with VISLON® zippers
- This fleece fabric meets the requirements of: NFPA 2112, NFPA 70E, CSA Z462



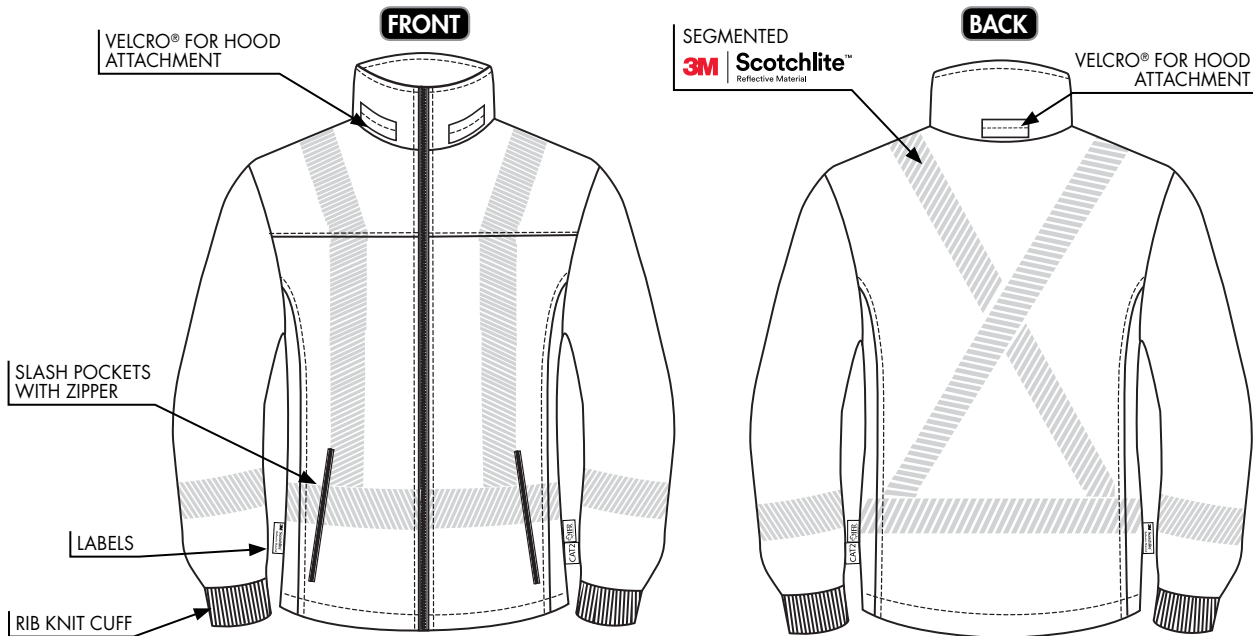
STOCK COLOURS:



STOCK SIZES:

XS	S	M	L	XL	2XL
----	---	---	---	----	-----

Pairs Perfectly With:
Fleece Hood
Style 364



3M™ and Scotchlite™ are trademarks of 3M™ used under license by IFR Workwear Inc. in Canada.

THE TRUSTED LEADER IN QUALITY FLAME AND ARC RESISTANT WORKWEAR

www.ifrworkwear.ca | 403-347-5480 | info@ifrworkwear.ca

Style 750 - *Women's* IFR BaseWear Top

Style 760 - *Women's* IFR BaseWear Bottom

- 6.75 oz interlock, 45% modacrylic, 45% rayon, 10% para-aramid
- Inherently flame resistant and guaranteed for the life of the garment
- Medium weight, form fitting stretch comfort, very soft fabric with smooth flatlock seams
- Wear under FR garments for increased protection
- IFR BaseWear fabric meets the requirements of: NFPA 2112, NFPA 70E



STOCK COLOURS:



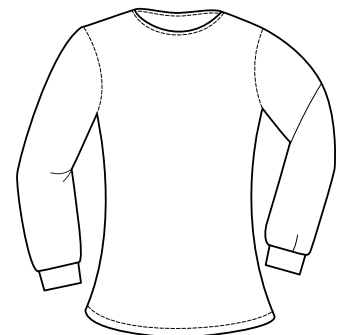
STOCK SIZES:

XS	S	M	L	XL	2XL	3XL
----	---	---	---	----	-----	-----

NEW!

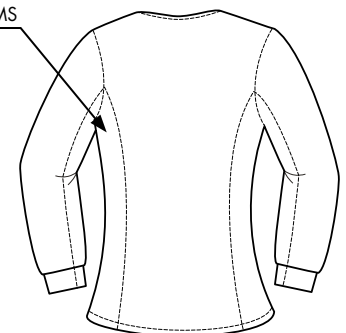


FRONT

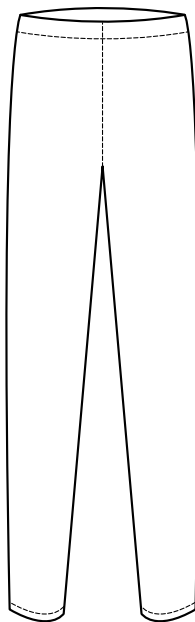


BACK

FLATLOCK SEAMS



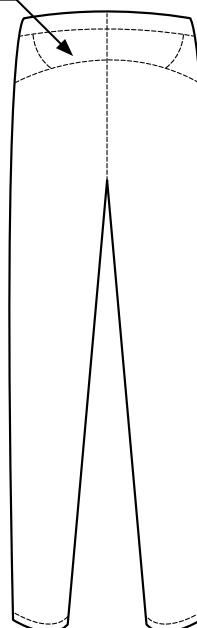
FRONT



BACK

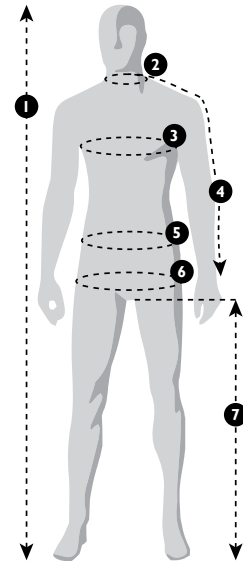
ENHANCED COMFORT BACK

FLATLOCK SEAMS



Sizing Guidelines

- 1. Height** Stand straight against a wall without your shoes. Measure from the top of your head to the bottom of your feet.
- 2. Neck** Measure around the base of your neck where a collared shirt would fit, or measure a collarband on a shirt that fits you well. Lay the collarband flat. Measure from the beginning of the button hole to the centre of the button.
- 3. Chest** Measure well under your arms, across your shoulder blades and over the fullest part of your chest. Hold the tape firmly, but not tightly. Be sure the tape is level and straight across your back. Stand naturally.
- 4. Sleeve** Bend elbow slightly. Start at the centre, back of the neck and measure across the shoulder to the elbow and down to the wrist.
- 5. Waist** First, remove your belt. Then, measure over shirt (not over pants) at the position you normally wear your pants. Hold the tape firmly, but not tightly.
- 6. Hips** Stand with your heels together. Measure around the fullest part of your hips, holding the tape measure level.
- 7. Inseam** Use similar style pants that fit you well. Lay them flat, with the front and back creases smooth. Measure along the inside seam of one leg from the bottom of the hem to the crotch.



WOMEN'S PANT SIZING

Size/Tag	26	28	30	32	34	36	38	40
Waist	26	28	30	32	34	36	38	40

WOMEN'S SHIRT SIZING

Size/Tag	XS	S	M	L	XL	2XL	3XL
Chest	18.5	20	21.5	23	24.5	26	28
Waist	17.5	19	20.5	22	23.5	25	27
Neck	6	6.25	6.5	6.75	7	7.25	7.875

WOMEN'S FLEECE SIZING

Size/Tag	XS	S	M	L	XL	2XL	3XL
Chest	18	19.5	21	22.5	24	25.5	27.5
Waist	16.5	18	19.5	21	22.5	24	26
Neck	6.25	6.5	6.75	7	7.25	7.5	7.875

2 PIECE COVERALL WOMEN'S & MEN'S SIZING

Size/Tag	34	36	38	40	42	44	46	48	50	52	54
Chest	30	32	34	36	38	40	42	44	46	48	50
Waist	24	26	28	30	32	34	36	38	40	42	44
Neck	13	13.5	14	14.5	15	15.5	16	16.5	17	17.5	18
Weight (lbs)	140	150	160	170	180	190	200	210	220	230	240

**Introducing:
Ruby Riggins!**

Our Women's Mascot



FORM FITTING

NO MORE SAGGY BOTTOMS

MIX AND MATCH

TOPS AND BOTTOMS

TO ACHIEVE THE CUSTOM FIT

FOR **ANY** BODY TYPE
